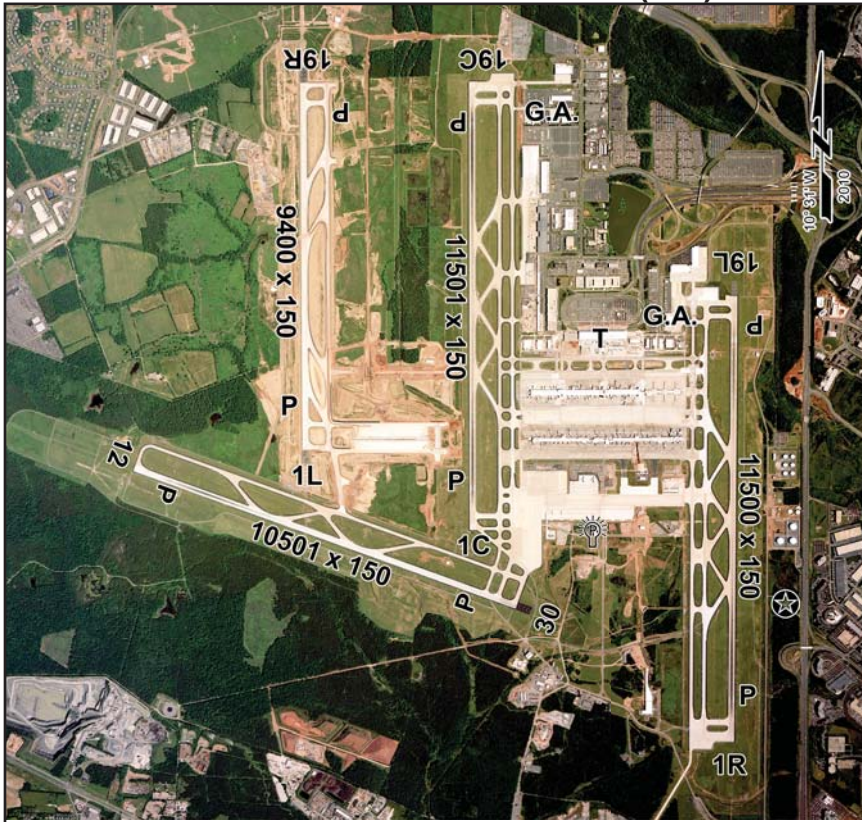


# WASHINGTON DULLES INTERNATIONAL (IAD)

20 W



**Sectional Chart:** Washington  
**Runway:** Rwy 01C-19C H11501 x 150 (CONC-GRVD), 01R-19L H11500 x 150 (CONC-GRVD), Rwy 01L-19R H9400 x 150 (CONC-GRVD), Rwy 12-30 H10501 x 150 (CONC-GRVD)  
**Traffic Pattern:** N/A  
**Runway Lights:** HIRL  
**Rotating Beacon:** Yes  
**Fuel:** 100LL, Jet A  
**Maintenance:** Major AF & PP  
**Manager:** Christopher Browne, P.O. Box 17045, Washington, DC 20041; (703) 572-2710  
**Airport Telephone:** (703) 572-2700  
**Airport Operators:** Signature Flight Support (703) 572-0001; Landmark Aviation (703) 661-0150; Dulles Jet Center (703) 996-1201  
**Hours of Operation:** Attended continuously  
**Remarks:** Deer and large flocks of birds on and in/ov arpt. PAEW adjacent all rwys and twys indef. Flight training between 0300-1200Z prohibited. Itinerant acft ctc fixed base operator on 122.95 for services. ASDE-X Surveillance System in use. Pilots should operate transponders with Mode C on all twys and rwys. Twy J-3 cisd west of Twy J. Runup blocks for Rwy 30 designated as non-movement area. Numerous flagged and lighted cranes operating in midfield area. During periods of acft saturation long term parking may not be avbl. Svc for fuel

and go only will be avbl. Ldg fee. Flight Notification Service (ADCUS) available.  
**Points of Interest:** Washington DC, National Air and Space Museum (Steven F. Udvar-Hazy Center near Dulles and National Mall Building), Mt. Vernon  
**Web Site:** www.mwaa.com  
**Weather Data Sources:** ASOS 134.85 (703) 661-2990. LLWAS, TDWR.  
**Communications:** D-ATIS 134.85 (703) 661-6347. UNICOM 11.95; ARMEL RCO 113.5T 122.1R (Leesburg Radio), Potomac APP CON 126.1 (331°-090°) 124.65 (091°-240°) 120.45 (241°-330°); TOWER 120.1 (Rwy 01R-19L) 120.25 (Rwy 01C-19C) 134.425 (Rwy 01L-19R, Rwy 12-30); MIDFIELD RAMP CON 129.55; GND CON 121.9 (East) 132.45 (West); CLNC DEL 135.7; Potomac DEP CON 126.65 (121°-299°) 125.05 (300°-120°)  
**Navigation Aids:** ARMEL (L) VORTAC 113.5; TILLE NDB (LOM) 346; ILS Rwy 19C 111.3; ILS Rwy 01C 111.3; ILS/DME Rwy 19L 110.1; ILS/DME Rwy 01R 110.1; ILS/DME Rwy 19R 110.75; ILS/DME Rwy 01L 110.75; ILS Rwy 12 109.3  
**Published Instrument Approach:** Yes  
**Approach Lighting:** Rwy 01C MALSR, TDZL, PAPI; Rwy 19C ALSF2, TDZL, PAPI; Rwy 01R ALSF2, TDZL, PAPI; Rwy 19L MALSR, PAPI; Rwy 01L ALSF2, TDZL, PAPI; Rwy 19R ALSF2, TDZL, PAPI; Rwy 12 MALSR, TDZL, PAPI; Rwy 30 REIL, PAPI

**WASHINGTON, DC**

**Latitude N38°56.85'**  
**Longitude W77°27.60'**

**Field Elevation**  
**312**